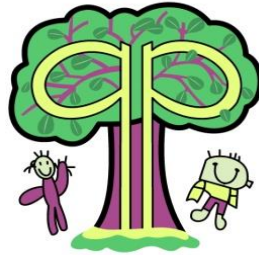


Perryfields



Primary

Perryfields Primary School

Charging and Remissions Policy

Author:	Terry Jones	Date: 20.6.2022
Last Reviewed on:	June 2022	
Next review due by:	June 2024	

INTRODUCTION

When organising school trips or visits which enrich the curriculum and educational experience of the children, the school invites parents to contribute to the cost of the trip. All contributions are voluntary. If we do not receive sufficient voluntary contributions, we may cancel a trip. Individual circumstances where the voluntary contribution may be difficult should be discussed with the Headteacher.

The following is a list of additional activities organised by the school, which require voluntary contributions from parents. These activities are known as 'optional extras'.

The school does not receive any additional funding to specifically support these activities. This list is not exhaustive:

- Offsite visits /activities to support the curriculum
- sporting activities which require transport expenses
- visits to the theatre/visiting companies/entertainment in school • musical events/tickets /transport costs

RESIDENTIAL VISITS

If the school organises a residential visit in school time or mainly school time, which is to provide education directly related to the National Curriculum, we do not make any charge for education. However, we do make a charge to cover the costs of board and lodging, transport and insurance. Prior to September 2011, the cost for residential visits was subsidised by the LA for pupils in receipt of Free School Meals. As from September 2011, Pupil Premium Payments, based on the numbers of FSM pupils, will be paid directly into the school's budget. This will be used to subsidise the cost of future visits for FSM pupils attending residential centres.

MUSIC TUITION

All children study music as part of the normal school curriculum and we do not make a charge for this. However, there is a charge for individual or group music tuition, if this is not part of the National Curriculum. The peripatetic music teachers teach individual or small group lessons and we make a charge for these lessons. We hold a waiting list for places and give parents information about additional music tuition as and when spaces are available.

SWIMMING

The school organises swimming lessons initially for all children in Year 3. Non swimmers from the rest of Key Stage 2 take up the surplus places, starting with pupils from Year 6. These take place during school time and are part of the National Curriculum. We make no charge for this activity. We inform parents when these

lessons are to take place, and we ask parents for their written permission for their child to take part in swimming lessons.

AFTER SCHOOL ACTIVITIES

The school offers additional activities after school. A small charge is made for these sessions to cover staffing costs, equipment and insurance. POSH Club also make a charge for this provision.